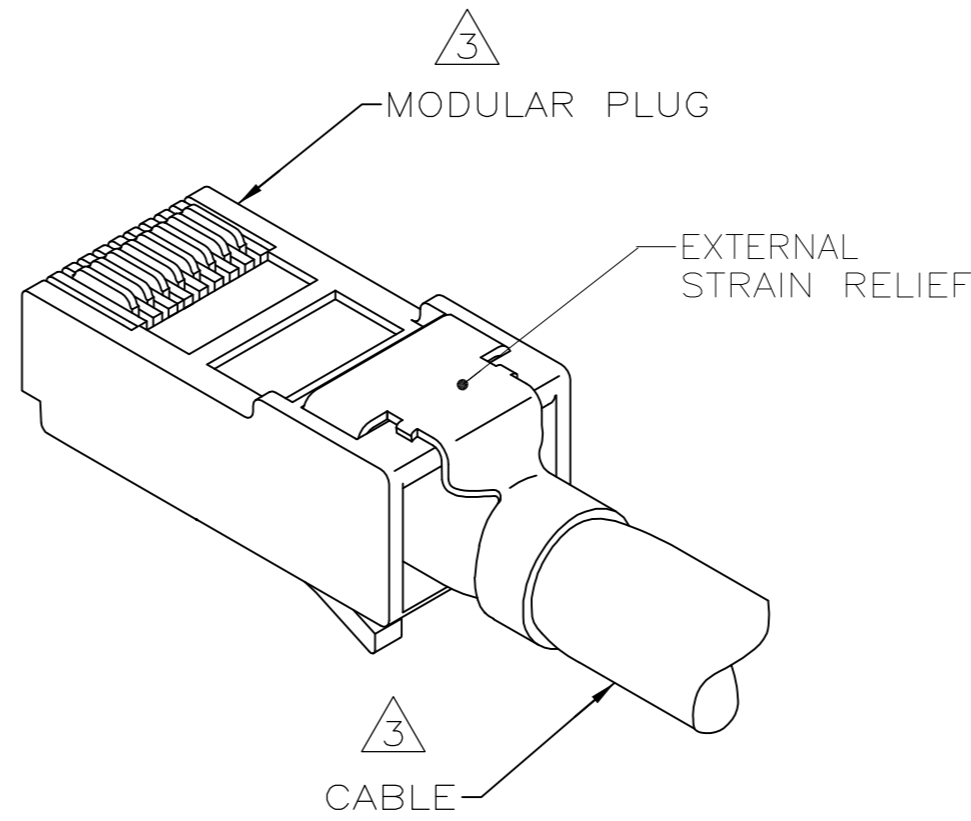
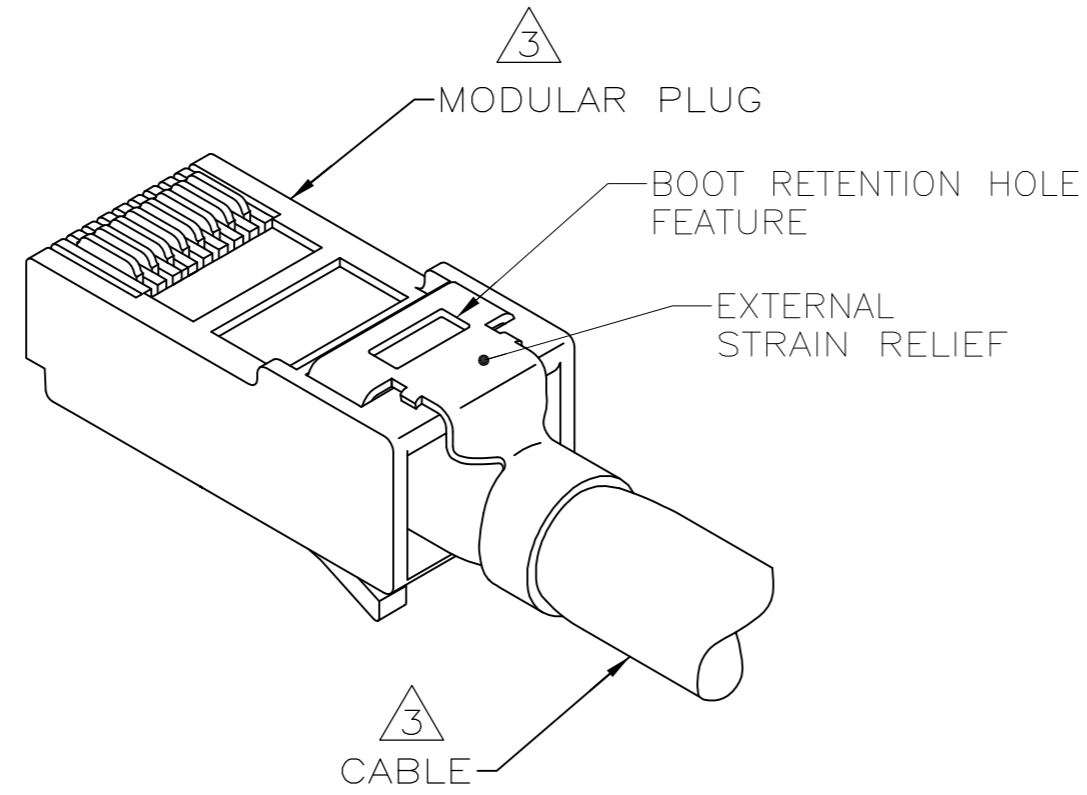


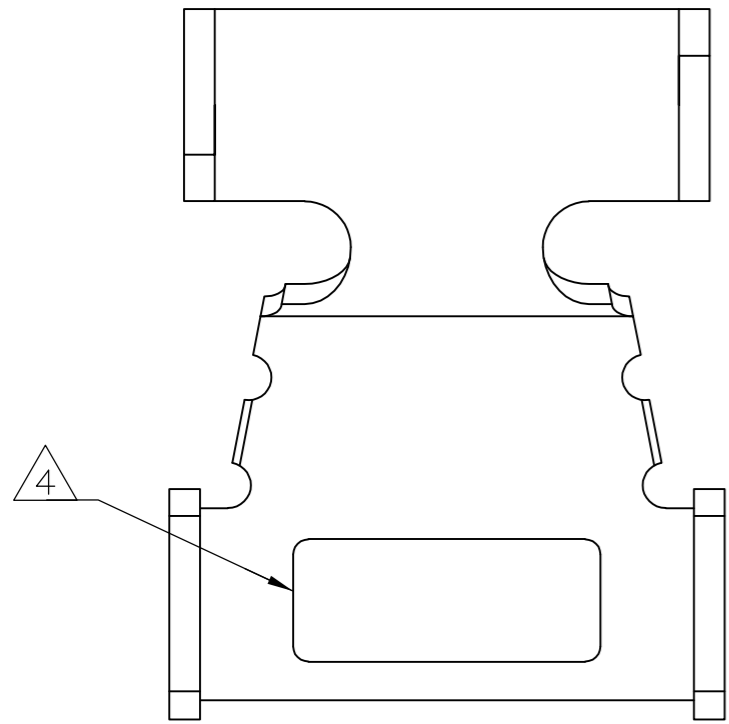
THIS DRAWING IS UNPUBLISHED. RELEASED FOR PUBLICATION
 © COPYRIGHT - By - ALL RIGHTS RESERVED.

| LOC | | DIST | | REVISIONS | | | |
|-----|-----|-------------|---------------------------|-----------|---------|------|-----|
| P | LTR | DESCRIPTION | | DATE | DWN | APVD | |
| AA | 22 | D1 | REVISED PER ECO-11-005140 | | 28MAR11 | RK | HMR |

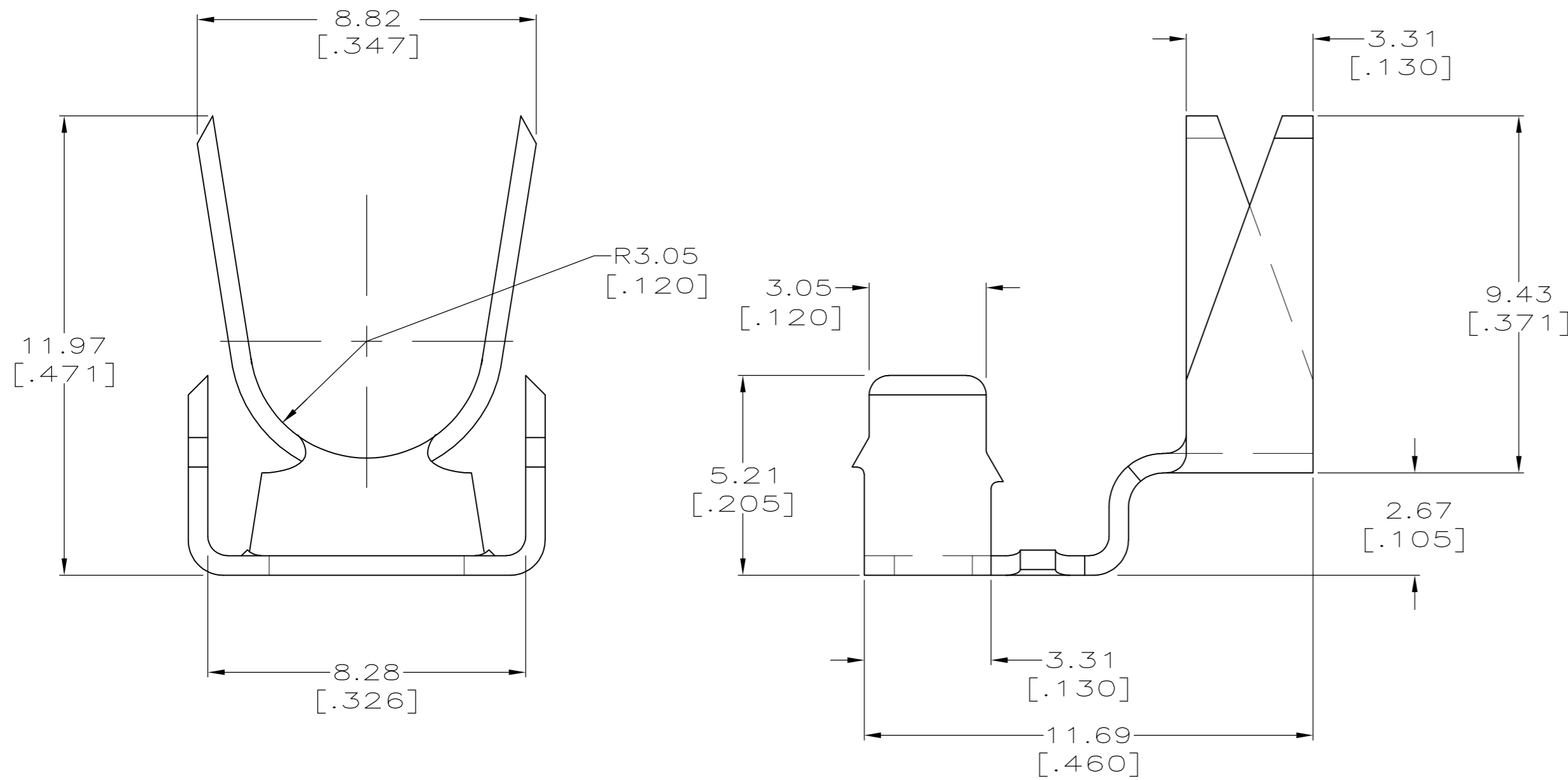


VIEW OF A PROPERLY APPLIED 558527-3

VIEW OF A PROPERLY APPLIED 558527-1



- ⚠ ALL DIMENSIONS ARE MAXIMUM UNLESS OTHERWISE SPECIFIED.
- ⚠ MATERIAL: BRIGHT PURE TIN PLATED BRASS.
- ⚠ MODULAR PLUG AND CABLE FURNISHED BY CUSTOMER.
- ⚠ 558527-3 HAS A 2.03 x 5.08 [.080 x .200] RECTANGULAR HOLE FOR RETENTION OF AMP MODULAR PLUG BOOT.
- 5. THESE EXTERNAL STRAIN RELIEF ACCESSORIES CAN BE UTILIZED ON ANY AMP BRAND 8 POSITION OR 10 POSITION MODULAR PLUG AS SHOWN.



LEAD FREE

| | |
|--------------|----------|
| ⚠ | 558527-3 |
| WITHOUT HOLE | 558527-1 |
| DESCRIPTION | PART NO. |

| | | | | | | | | | | | | |
|---|---|------------------|------------|----------|-------|-----------------|-----------|-------|-------------|----------|---------------|---|
| THIS DRAWING IS A CONTROLLED DOCUMENT. | | DWN | G. GARRETT | 9-20-95 | | TE Connectivity | | | | | | |
| DIMENSIONS: mm [INCHES] | | CHK | C. WHITT | 10-5-95 | | NAME | | | | | | |
| TOLERANCES UNLESS OTHERWISE SPECIFIED: | | APVD | E. LAURER | 10-12-95 | | PRODUCT SPEC | | | | | | |
| 0 PLC ± - 1 PLC ± - 2 PLC ± - 3 PLC ± - 4 PLC ± - ANGLES ± - | | APPLICATION SPEC | | N/A | | | | | | | | |
| MATERIAL | ⚠ | WEIGHT | .615 grams | | SIZE | A2 | CAGE CODE | 00779 | DRAWING NO. | C=558527 | RESTRICTED TO | - |
| CUSTOMER DRAWING | | SCALE | 8:1 | | SHEET | 1 of 1 | | REV | D1 | | | |

- 558527