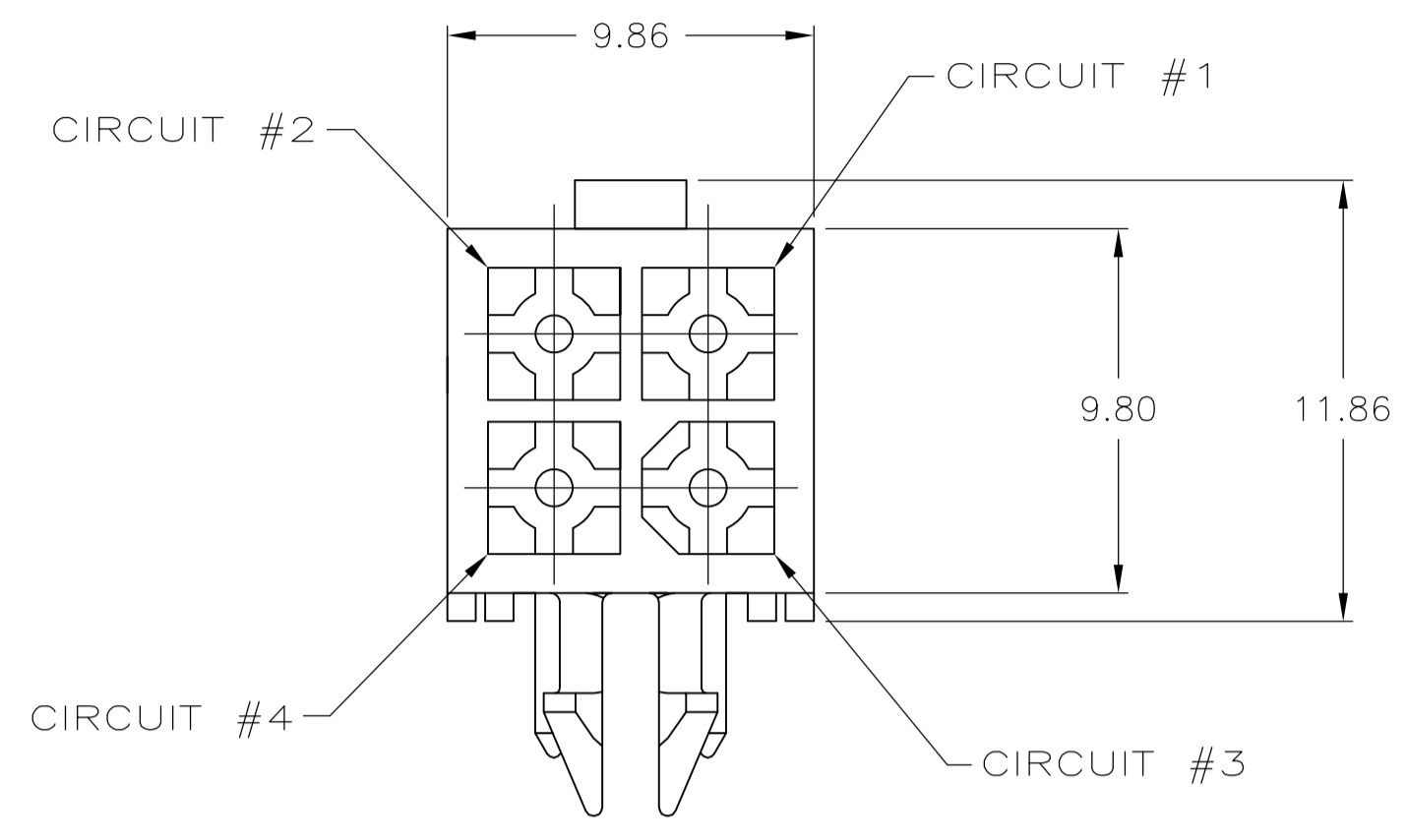
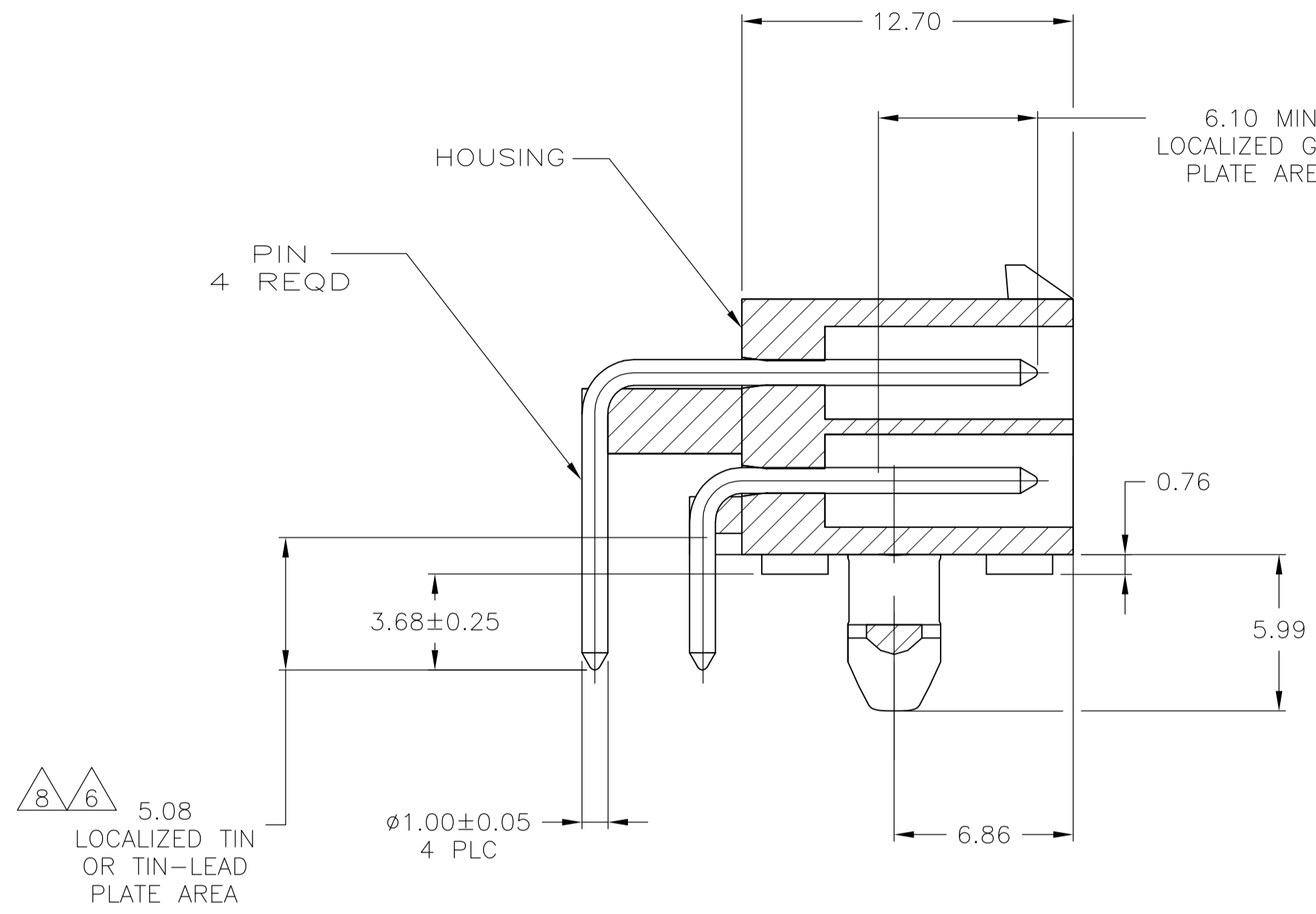
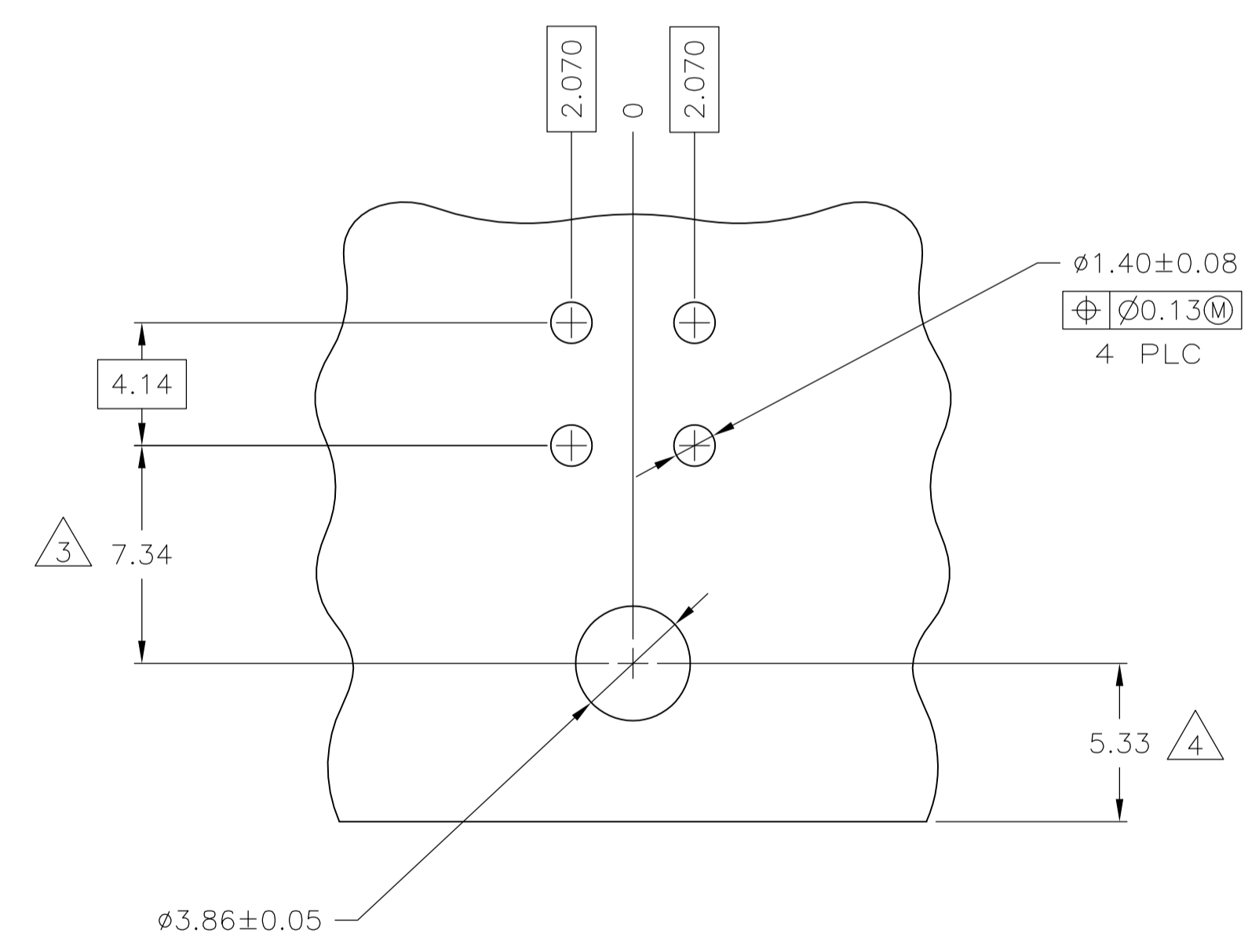


LOC		DIST		REVISIONS			
P	LTR	DESCRIPTION	DATE	DWN	APVD		
G1		REVISED PER ECO-11-004587	11MAR11	RK	HMR		



1. PINS TO COMPLY WITH AMP SOLDERABILITY SPEC 109-11-3.
2. MATES WITH PLUG P/N 172167-1.
3. COORDINATE DIMENSION APPLIES FROM CENTER OF ACTUAL FEATURE.
4. RECOMMENDED FOR EDGE MOUNTING.
5. 0.00381 MIN MATTE TIN LEAD OVER 0.00127 MIN NICKEL ENTIRE LENGTH OF PIN.
6. 0.00076 MIN GOLD PLATE IN THE LOCALIZED PLATE AREA, 0.00381 MIN MATTE TIN LEAD IN THE LOCALIZED PLATE AREA, BOTH OVER 0.00127 MIN NICKEL.
7. 0.00381 MIN MATTE TIN OVER 0.00127 MIN NICKEL ENTIRE LENGTH OF PIN.
8. 0.00076 MIN GOLD PLATE IN THE LOCALIZED GOLD PLATE AREA, 0.00381 MIN MATTE TIN IN THE LOCALIZED TIN PLATE AREA, BOTH OVER 0.00127 MIN NICKEL.



RECOMMENDED MOUNTING HOLE PATTERN FOR 1.57 THICK P.C. BOARD

2.070	.0815	12.70	.500
1.57	.062	9.86	.388
1.40	.055	9.80	.386
1.00	.039	7.34	.289
0.76	.030	6.86	.270
0.25	.010	6.10	.240
0.13	.005	5.99	.236
0.08	.003	5.33	.210
0.05	.002	5.08	.200
0.00381	0.00150	4.14	.163
0.00127	0.00050	3.86	.152
0.00076	0.00030	3.68	.145
MM	IN	MM	IN

CONVERSION TABLE

MATERIAL	PIN FINISH	MATERIAL	HOUSING COLOR	PART NO.
BRASS	8	NYLON, UL94V-0	WHITE	1-770968-1
BRASS	7	NYLON, UL94V-0	WHITE	1-770968-0
BRASS	6	NYLON, UL94V-0	WHITE	770968-2
BRASS	5	NYLON, UL94V-0	WHITE	770968-1

THIS DRAWING IS A CONTROLLED DOCUMENT.

DIN S. CARPENTER 24JUL03	TE Connectivity
CHK C. JONES 24JUL03	
APVD G. JONES 24JUL03	NAME
PRODUCT SPEC	HEADER ASSEMBLY, RIGHT ANGLE, WITH SHORT PEG, 4 CIRCUIT, MINI UNIVERSAL MATE-N-LOK(TM)
APPLICATION SPEC	SIZE
WEIGHT	SCALE 5:1
CUSTOMER DRAWING	SHEET 1 OF 1

REVISIONS: 1.00779 C=770968

