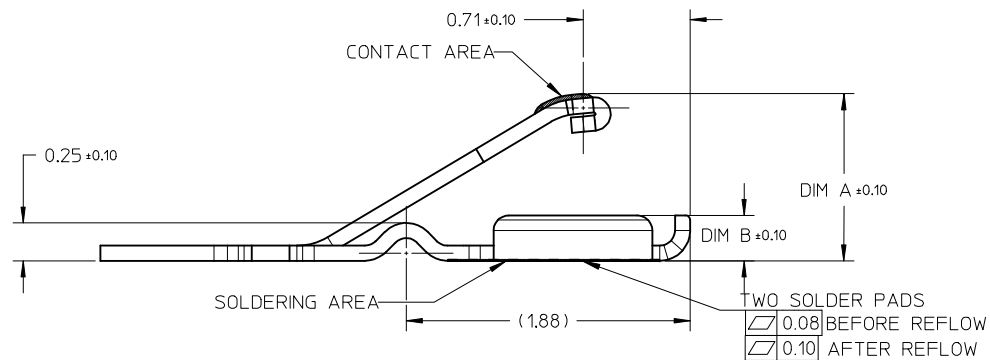
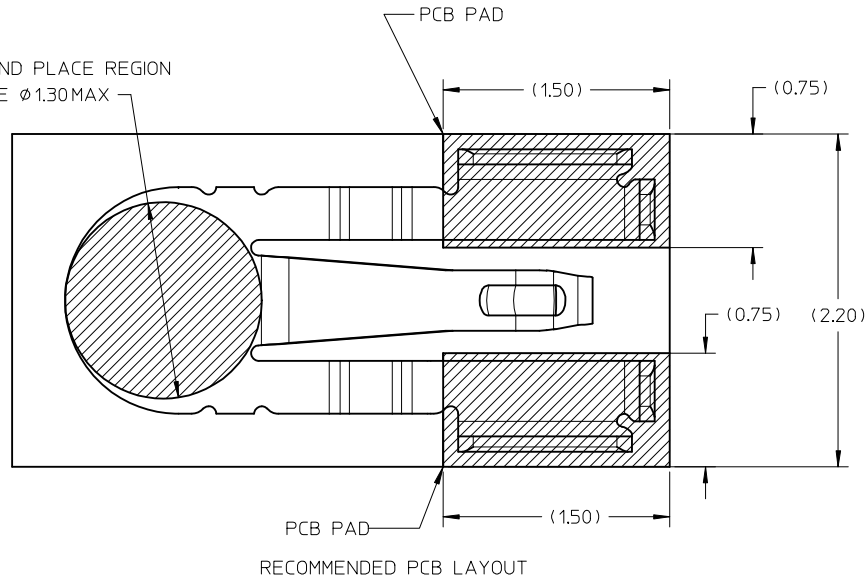


PICK AND PLACE REGION
NOZZLE ϕ 1.30 MAX



P/N:	DIM A (FREE HEIGHT)	DIM B	WORKING RANGE
105384-0001	1.10	0.30	0.40~0.80
105384-0002	1.40	0.60	0.70~1.10

- NOTES:
- MATERIAL: STAINLESS STEEL
 - FINISH:
 - NI UNDER PLATING OVERALL: 24 μ m MINIMUM
 - SOLDERING AREA: GOLD FLASH
 - CONTACT AREA: 0.50 μ m Au MINIMUM
 - PRODUCT COMPLIANT TO ROHS DIRECTIVE 2011/65/EU AND ELV DIRECTIVE 2003/53/EC.

RELEASE EC NO: SH2016-0120 DRW:RL109 2015/08/25 CHKD: APPR:RZHANG 2015/12/03	QUALITY SYMBOLS	GENERAL TOLERANCES (UNLESS SPECIFIED)	DIMENSION STYLE MM ONLY	SCALE 30:1	DESIGN UNITS METRIC	THIRD ANGLE PROJECTION
	$F_A=0$	4 PLACES	mm INCH	DRAWN BY RL109	DATE 2014/03/20	TITLE SPRING CLIP
	$F_G=0$	3 PLACES	\pm ---	CHECKED BY	DATE	
	$F_P=0$	2 PLACES	\pm 0.15	APPROVED BY RZHANG	DATE 2015/03/16	
	1 PLACE	\pm 0.20	MATERIAL NO.	DOCUMENT NO.		
	0 PLACE	\pm ---	ANGULAR \pm 3 °	SEE TABLE	SD-105384-001	SHEET NO. 1 OF 5
		DRAFT WHERE APPLICABLE MUST REMAIN WITHIN DIMENSIONS	SIZE A3	THIS DRAWING CONTAINS INFORMATION THAT IS PROPRIETARY TO MOLEX INCORPORATED AND SHOULD NOT BE USED WITHOUT WRITTEN PERMISSION		

10 9 8 7 6 5 4 3 2 1

F

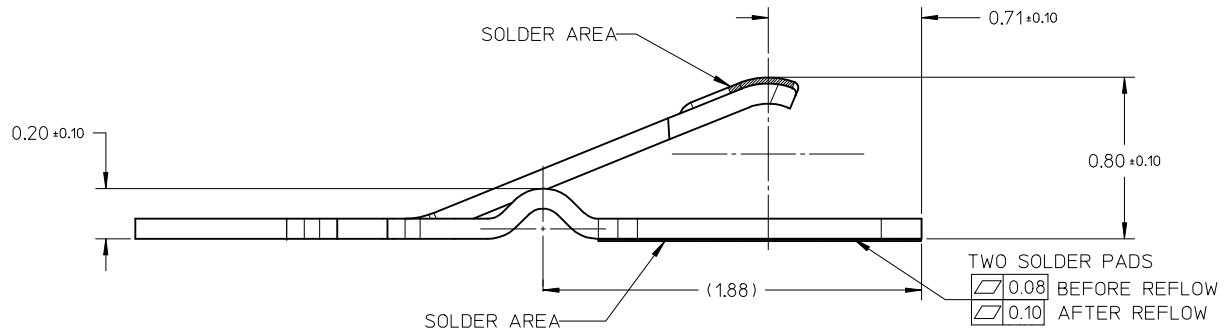
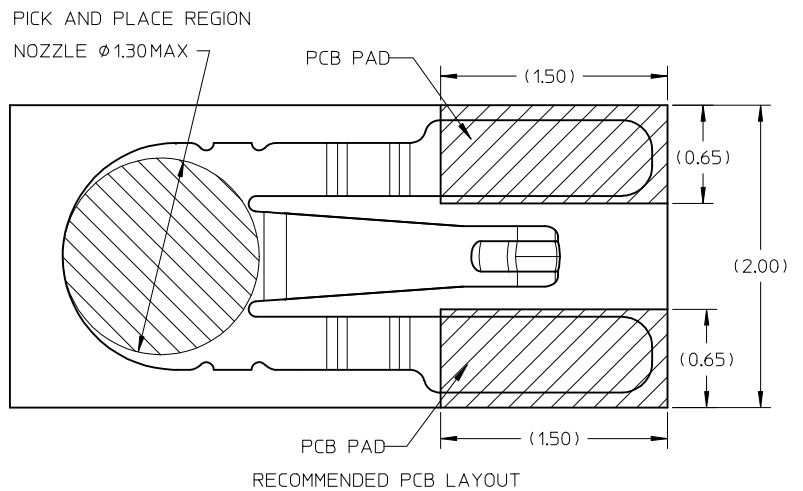
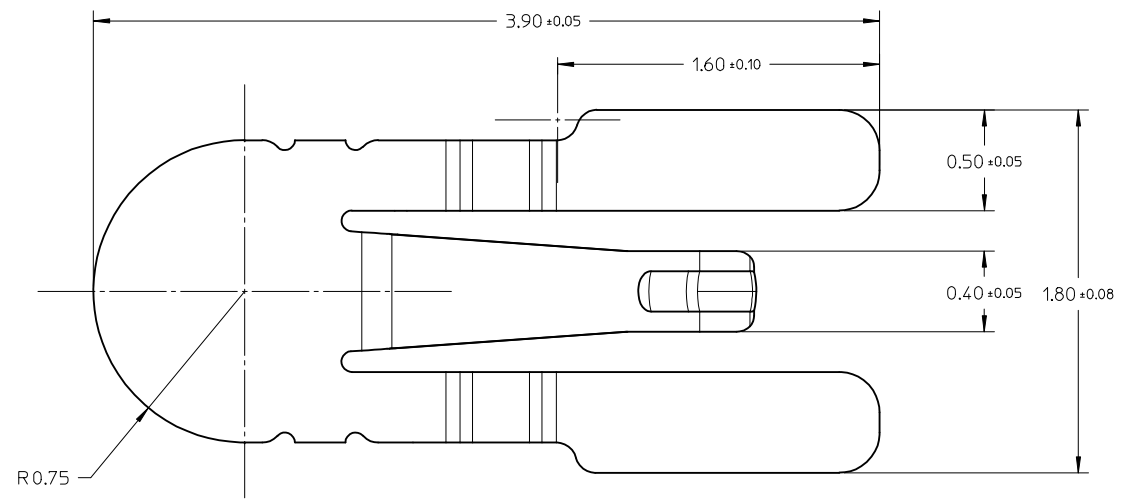
E

D

C

B

A



PART NUMBER	WORKING RANGE
105384-0003	0.30 ~ 0.55

NOTES:
 1. MATERIAL: STAINLESS STEEL
 2. FINISH:
 NI UNDER PLATING OVERALL: 24μm MINIMUM
 SOLDERING AREA: GOLD FLASH
 CONTACT AREA: 0.50μm Au MINIMUM
 3. PRODUCT COMPLIANT TO ROHS DIRECTIVE 2011/65/EU
 AND ELV DIRECTIVE 2003/53/EC.

RELEASE
 EC NO: SH2016-0120
 DRW: RL109
 CHKD:
 APPR: RZHANG

2015/08/25
 2015/12/03
 DESCRIPTION
 REV

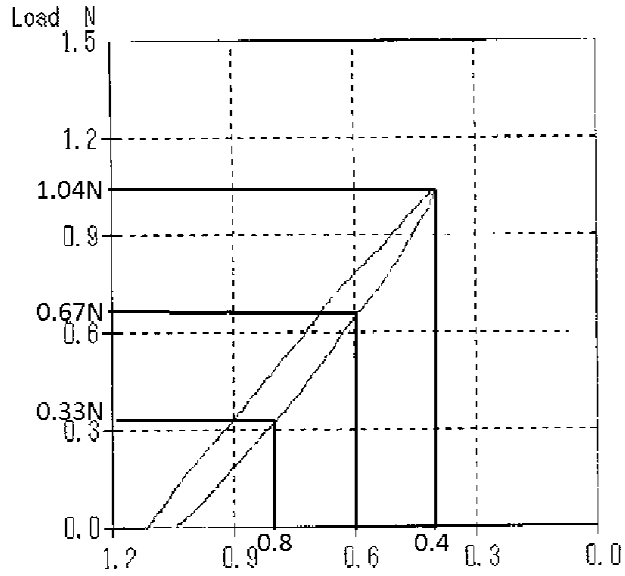
QUALITY SYMBOLS	$F_A=0$	GENERAL TOLERANCES (UNLESS SPECIFIED)	mm	INCH	
	$F_C=0$		4 PLACES	± ---	± ---
	$F_D=0$		3 PLACES	± ---	± ---
	$F_P=0$		2 PLACES	± 0.15	± ---
			1 PLACE	± 0.20	± ---
			0 PLACE	± ---	± ---
			ANGULAR ± 3 °		
			DRAFT WHERE APPLICABLE MUST REMAIN WITHIN DIMENSIONS		

DIMENSION STYLE		SCALE	DESIGN UNITS	THIRD ANGLE PROJECTION
MM ONLY		40:1	METRIC	
DRAWN BY	DATE	TITLE		
RL109	2014/03/20	SPRING CLIP		
CHECKED BY	DATE			
APPROVED BY	DATE			
RZHANG	2015/03/16			
MATERIAL NO.	DOCUMENT NO.	SHEET NO.		
SEE TABLE	SD-105384-001	2 OF 5		

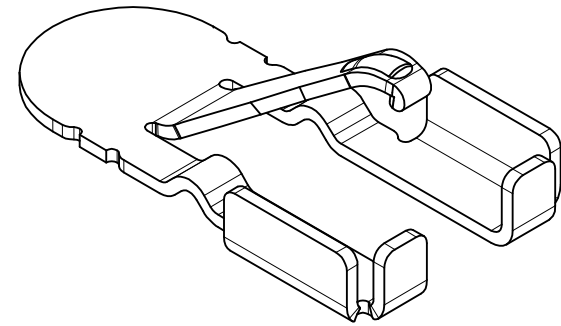
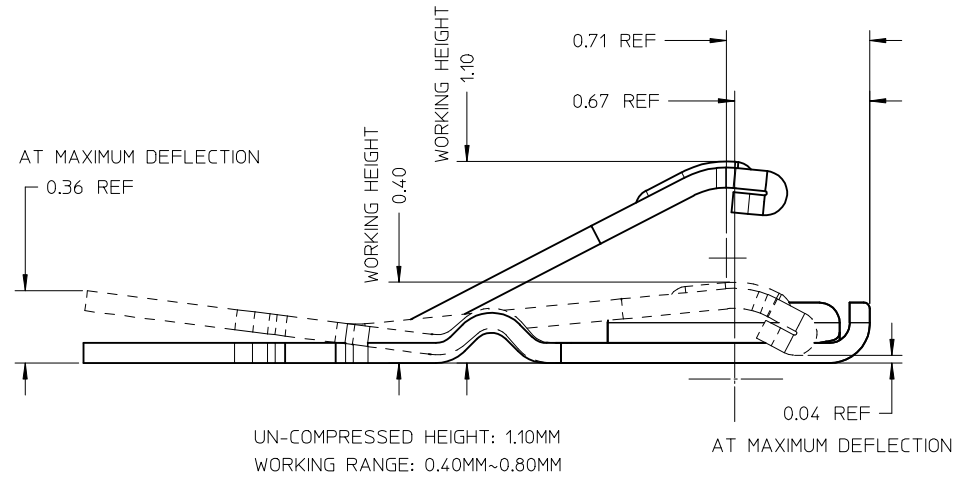
THIS DRAWING CONTAINS INFORMATION THAT IS PROPRIETARY TO MOLEX INCORPORATED AND SHOULD NOT BE USED WITHOUT WRITTEN PERMISSION

9 8 7 6 5 4 3 2 1

NORMAL FORCE CURVE



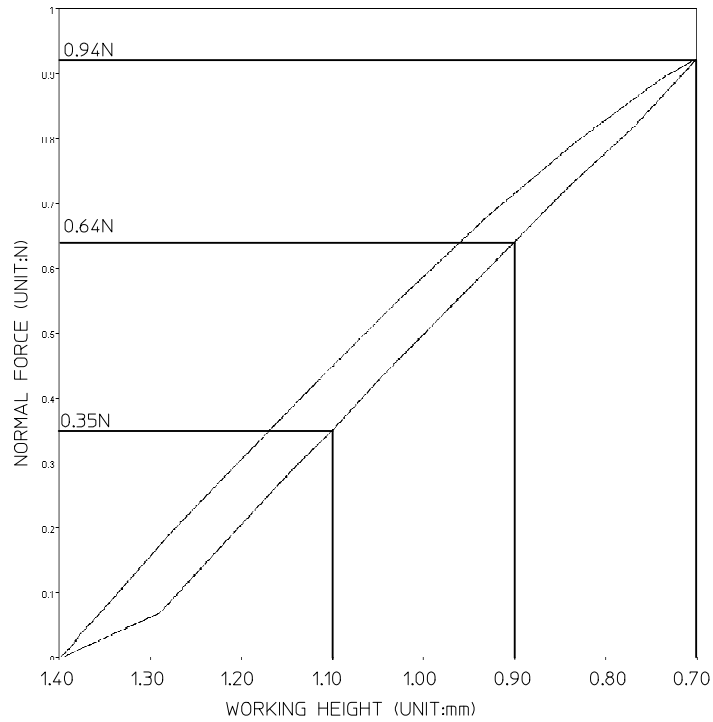
NORMAL FORCE: 0.33N AT 0.80 MM WORKING HEIGHT (MINIMUM DEFLECTION)
 NORMAL FORCE: 0.67N AT 0.60 MM WORKING HEIGHT (NORMAL DEFLECTION)
 NORMAL FORCE: 1.04N AT 0.40 MM WORKING HEIGHT (MAXIMUM DEFLECTION)
 (NORMAL FORCE IS ONLY FOR REFERENCE)



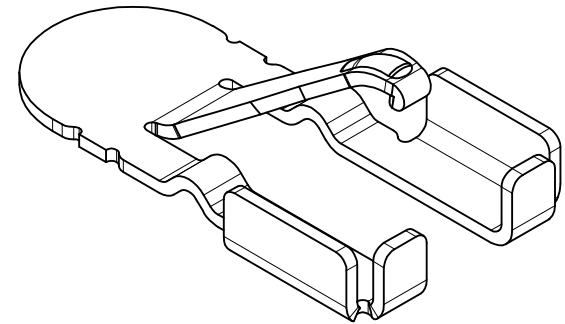
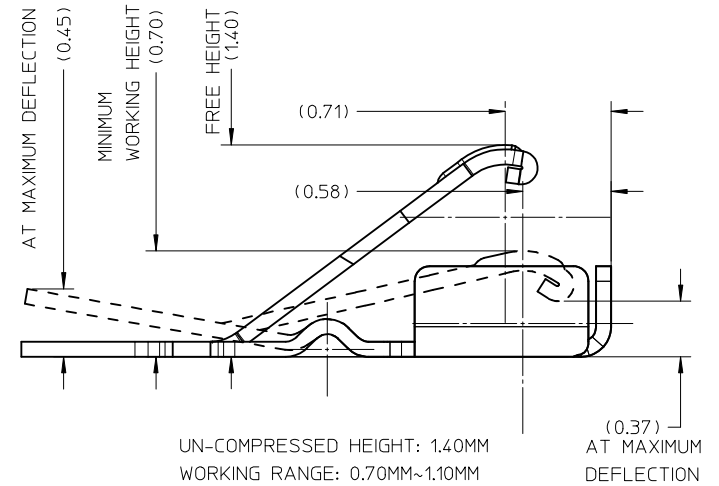
1053840001

RELEASE EC NO: SHZ016-0120 DRW:RL109 2015/08/25 CHKD: APPR:RZHANG 2015/12/03 REV	QUALITY SYMBOLS	GENERAL TOLERANCES (UNLESS SPECIFIED)		DIMENSION STYLE	SCALE	DESIGN UNITS	THIRD ANGLE PROJECTION
	$F_A=0$ $F_G=0$ $F_P=0$	mm	INCH	MM ONLY	4:1	METRIC	
		4 PLACES	± ---	± ---	DRAWN BY	DATE	TITLE
		3 PLACES	± ---	± ---	RL109	2014/03/20	SPRING CLIP
	2 PLACES	± 0.15	± ---	CHECKED BY	DATE		
	1 PLACE	± 0.20	± ---	APPROVED BY	DATE		
	0 PLACE	± ---	± ---	RZHANG	2015/03/16		
		ANGULAR ± 3 °		MATERIAL NO.	DOCUMENT NO.		
		DRAFT WHERE APPLICABLE MUST REMAIN WITHIN DIMENSIONS		SEE TABLE		SD-105384-001	SHEET NO. 3 OF 5
		SIZE	THIS DRAWING CONTAINS INFORMATION THAT IS PROPRIETARY TO MOLEX INCORPORATED AND SHOULD NOT BE USED WITHOUT WRITTEN PERMISSION				
		A3					

NORMAL FORCE CURVE



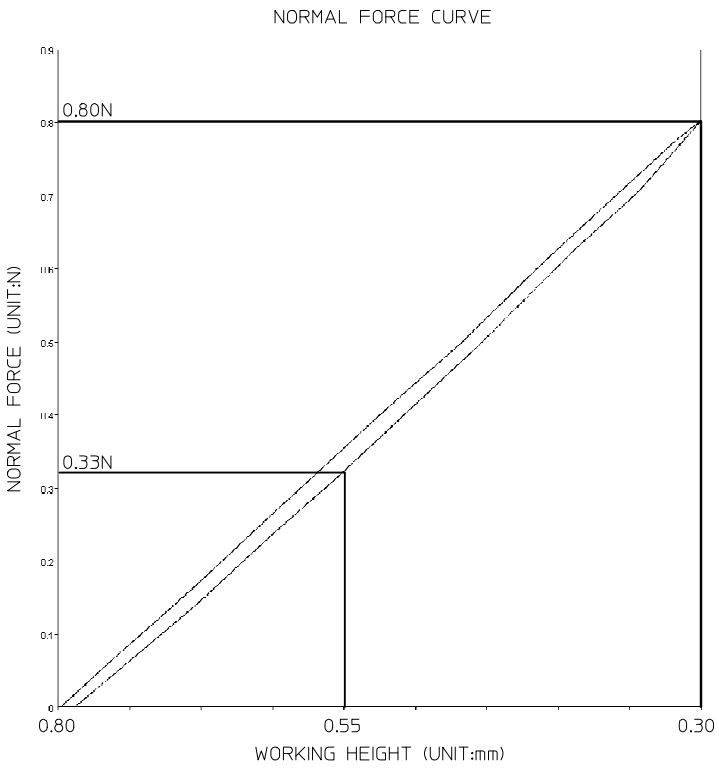
NORMAL FORCE: 0.35N AT 1.10 MM WORKING HEIGHT (MINIMUM DEFLECTION)
 NORMAL FORCE: 0.64N AT 0.90 MM WORKING HEIGHT (NORMAL DEFLECTION)
 NORMAL FORCE: 0.94N AT 0.70 MM WORKING HEIGHT (MAXIMUM DEFLECTION)



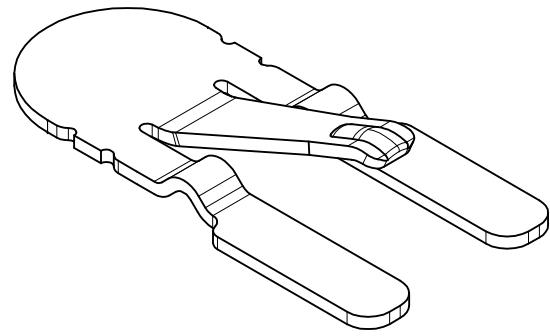
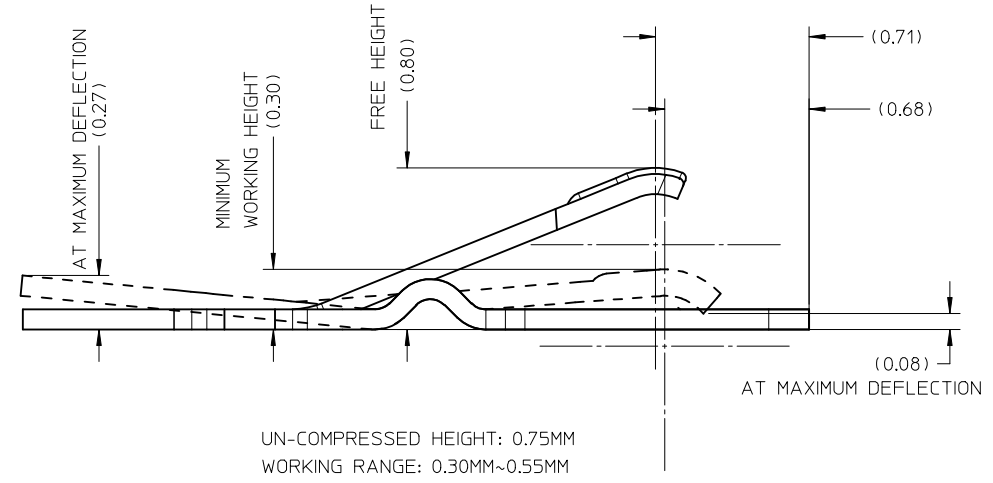
1053840002

RELEASE EC NO: SH2016-0120 DRWNR: RL109 CHKD: APPR: RZHANG 2015/08/25 2015/12/03	QUALITY SYMBOLS	GENERAL TOLERANCES (UNLESS SPECIFIED)	DIMENSION STYLE	SCALE	DESIGN UNITS	THIRD ANGLE PROJECTION
	$F_A=0$ $F_G=0$ $F_P=0$	mm INCH 4 PLACES ± --- ± --- 3 PLACES ± --- ± --- 2 PLACES ± 0.15 ± --- 1 PLACE ± 0.20 ± --- 0 PLACE ± --- ± ---	MM ONLY	30:1	METRIC	
		ANGULAR ± 3 ° DRAFT WHERE APPLICABLE MUST REMAIN WITHIN DIMENSIONS	DRAWN BY: RL109 CHECKED BY: APPROVED BY: RZHANG DATE: 2014/03/20 DATE: 2015/03/16	TITLE	SPRING CLIP	
			MATERIAL NO. SEE TABLE	DOCUMENT NO. SD-105384-001	SHEET NO. 4 OF 5	

THIS DRAWING CONTAINS INFORMATION THAT IS PROPRIETARY TO MOLEX INCORPORATED AND SHOULD NOT BE USED WITHOUT WRITTEN PERMISSION



NORMAL FORCE: 0.33N AT 0.55 MM WORKING HEIGHT (MINIMUM DEFLECTION)
 NORMAL FORCE: 0.80N AT 0.30 MM WORKING HEIGHT (MAXIMUM DEFLECTION)
 (NORMAL FORCE IS ONLY FOR REFERENCE)



1053840003

RELEASE EC NO: SHZ016-0120 DRW:RL109 2015/08/25 CHKD: APPR:RZHANG 2015/12/03	QUALITY SYMBOLS $F_A=0$ $F_G=0$ $F_P=0$	GENERAL TOLERANCES (UNLESS SPECIFIED)		DIMENSION STYLE MM ONLY	SCALE 50:1	DESIGN UNITS METRIC	THIRD ANGLE PROJECTION		
		4 PLACES \pm --- \pm ---	3 PLACES \pm --- \pm ---	DRAWN BY RL109	DATE 2014/03/20	TITLE SPRING CLIP			
		2 PLACES \pm 0.15 \pm ---	1 PLACE \pm 0.20 \pm ---	CHECKED BY	DATE	APPROVED BY RZHANG			
		0 PLACE \pm --- \pm ---	ANGULAR \pm 3 °	MATERIAL NO.	DATE 2015/03/16	DOCUMENT NO. SD-105384-001		SHEET NO. 5 OF 5	
DRAFT WHERE APPLICABLE MUST REMAIN WITHIN DIMENSIONS	SIZE A3	THIS DRAWING CONTAINS INFORMATION THAT IS PROPRIETARY TO MOLEX INCORPORATED AND SHOULD NOT BE USED WITHOUT WRITTEN PERMISSION							